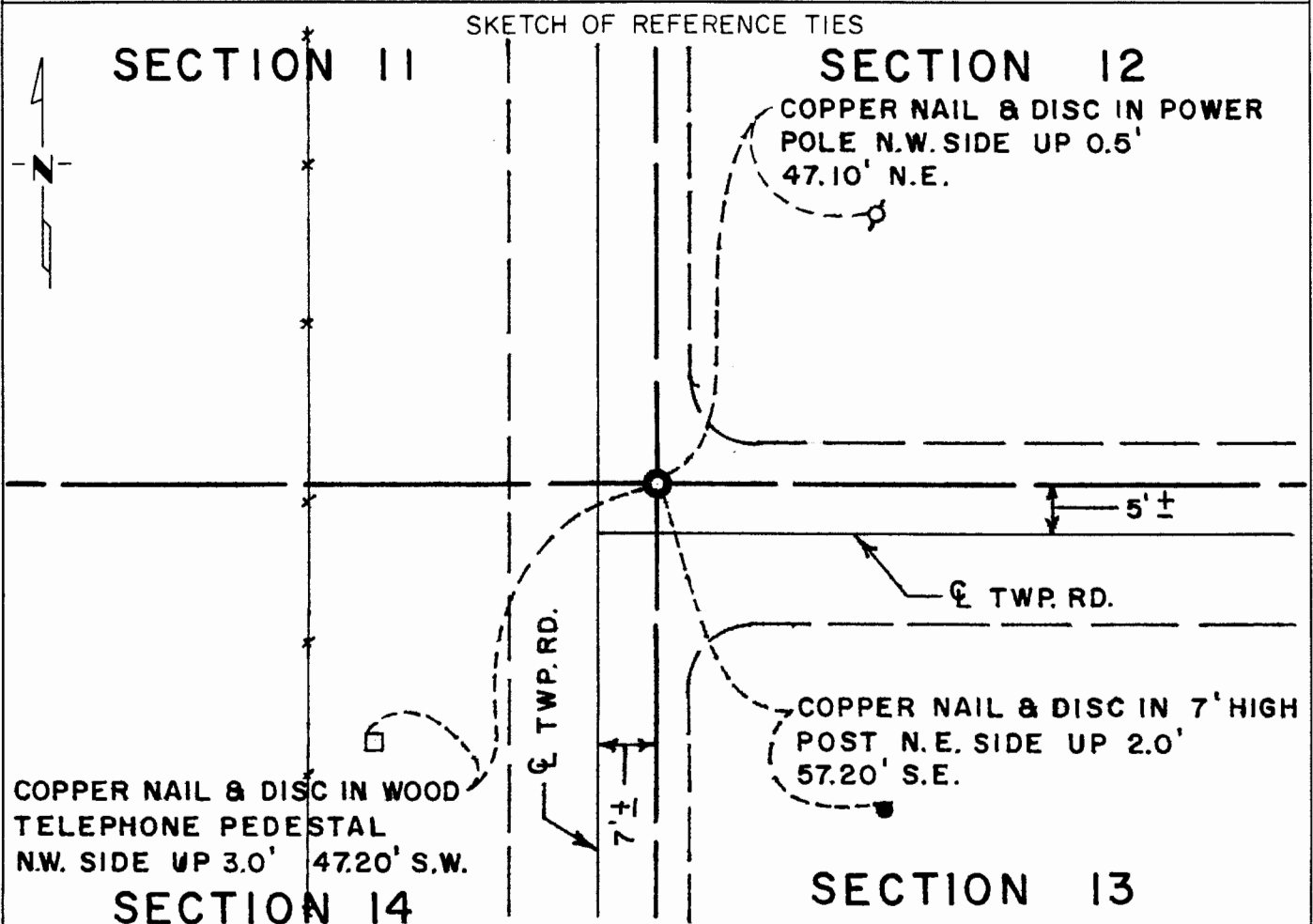


CERTIFICATE OF LOCATION OF GOVERNMENT CORNERNortheast Corner of Section 14, Township 107N, Range 41W, 5th P.M.STATE OF MINNESOTA, County of Murray

At the corner location shown on the sketch:

☒ On Sep. 23, 1981 found a two blue stones lying side by side about 24"
DATE
below road surface - larger, higher stone considered to be corner
☒ left monument as found, ☐ lowered monument, ☐ removed monument (explain)

☒ On Sep. 23, 1981 placed a cast iron monument above the larger of the two
DATE
stones so top of cast iron is about 4" below road surface



Statement of evidence relative to this corner location is on back of page.

I hereby certify that this document and the data contained herein was prepared by me or under my direct supervision.

Robert Jones
SIGNATURE

9/30/81
DATE

Registration No. 11864☒ Land Surveyor, ☐ Professional Engineer☐ County Surveyor, ☐ County Engineer

OFFICE OF THE COUNTY RECORDER
 County of Murray

I hereby certify that this document was filed in the Co. Recorders office at 2:40 P.M. on the 9th day of September A.D., 1982

County Recorder Willard W. Ohme

By _____, Deputy

DOCUMENT NO. 166210

Statement of Evidence: Northeast Corner Section 14, T 107 N, R 41 W

- 1861 - The original Public Land Survey was done by L.G.M. Fletcher. A wood post was set above a charred stake in a dirt mound and trenches and pits were dug to mark the corner.
- 1981 - No records could be found of any surveys or remonumentation being done in this area since the original Public Land Survey.

A Minnesota Department of Transportation survey crew excavated for this corner. A hole measuring 10 feet by 15 feet by 2 feet deep was dug. Two blue stones lying side by side were found about 24" below the road surface. The southernmost stone is somewhat pointed and measures 8" by 12" by 12" and the point of this stone was about 4" or 5" higher than the other stone. The northernmost stone is flat and is about 4" thick and somewhat triangular in shape and measures about 8" by 6" on the flat surface. This stone was lying flat. The larger stone with the higher point was considered to be the location of the section corner.

A Mn/DOT cast iron monument was placed directly over the larger of the two stones so that the top of the cast iron is about 4" below the road surface.

The stones were found about 7 feet east of the centerline of a north/south township road and about 5 feet north of the centerline of a township road east. They were the only stones found in this rather large excavation and it seems it is not coincidence that the two stones were lying side by side. The stones are accepted as the location of the section corner because no other evidence of the location of the corner could be found.

For further information regarding this corner, contact the Mn/DOT Surveys Section in Willmar, Mn 56201.